



Company : Santos

Well : Henry 2DW1 ST1

Interval : 802.00 - 1733.80 meters

Created : 16/Oct/2008 6:23:32 AM



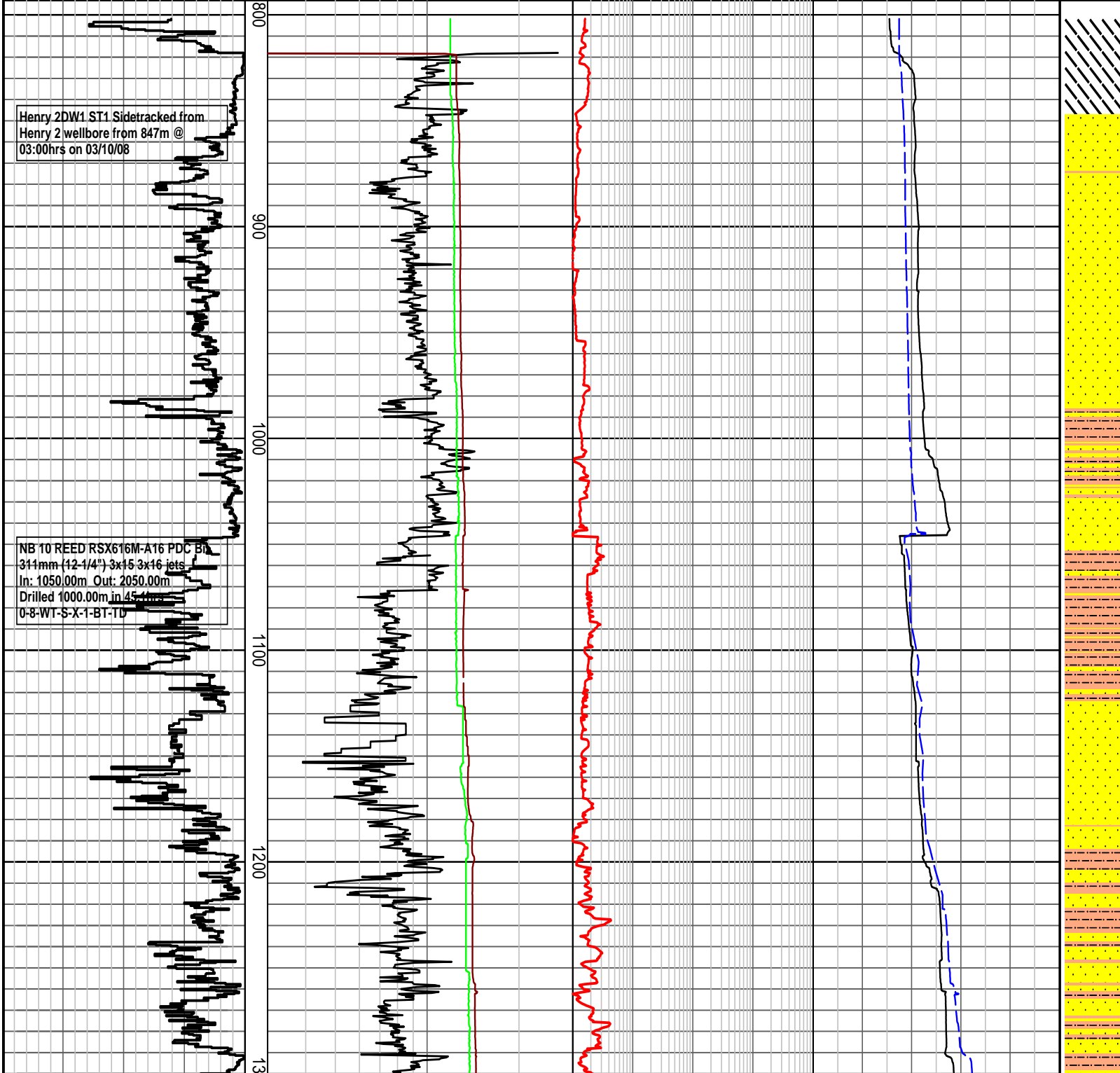
INTEQ

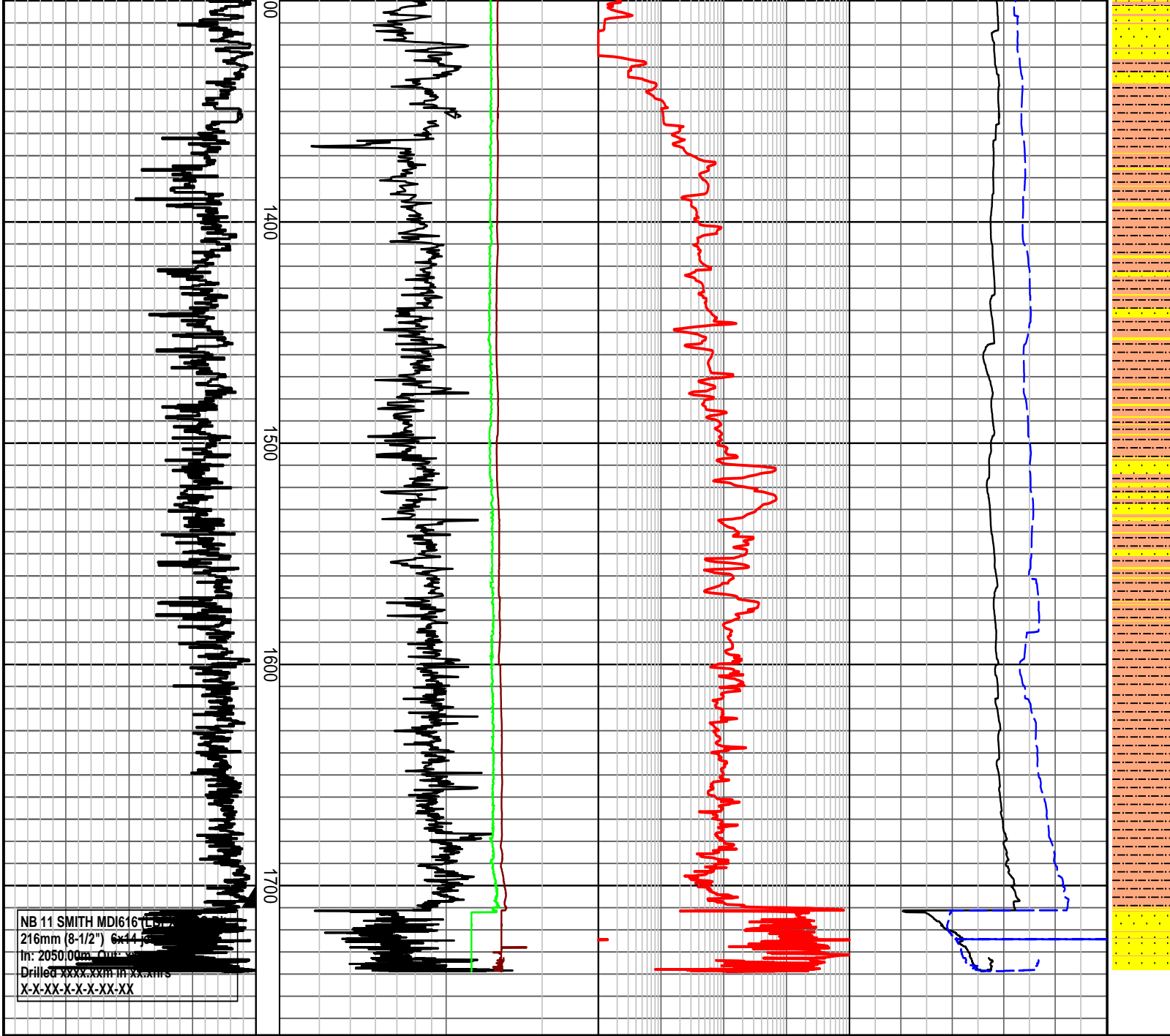
HENRY 2DW1 ST1 PRESSURE DATA PLOT

Rate Of Penetration ROP 200 150 100 50 m/hr	Drilling Exponent DXC 3	Gas Data TOTAL GAS 1 10 100 1000 unit	Temperature Data MUD TEMP IN 20 40 60 80 100 degC MUD TEMP OUT 20 40 60 80 100 degC	INTERPRETED LITHOLOGY
	Mud Weight In sg 3			
	ECD at T.D. sg 3			

Henry 2DW1 ST1 Sidetracked from Henry 2 wellbore from 847m @ 03:00hrs on 03/10/08

NB 10 REED RSX616M-A16 PDC Bit
311mm (12-1/4") 3x15 3x16 jets
In: 1050.00m Out: 2050.00m
Drilled 1000.00m in 45.1hrs
0-8-WT-S-X-1-BT-TD





NB 11 SMITH MDI616 TL
 216mm (8-1/2") Cx14
 In: 2050.00m Out: X
 Drilled XXXX.XXX in XXX.XX
 X-X-XX-X-X-X-XX-XX

HENRY 2DW1 ST1 PRESSURE DATA PLOT

Rate Of Penetration ROP	Drilling Exponent DXC	Gas Data TOTAL GAS	Temperature Data MUD TEMP IN	INTERPRETED LITHOLOGY
200 150 100 50 m/hr	3	1 10 100 1000 unit	20 40 60 80 100 degC	
	Mud Weight In sg 3		MUD TEMP OUT degC 20 40 60 80 100	
	ECD at T.D. sg 3			

TVD meters 1:2500